



[www.sfe.com.au](http://www.sfe.com.au)

30 Grosvenor Street  
Sydney NSW 2000 Australia  
Telephone 61 2 9256 0555  
Facsimile 61 2 9256 0666

PO Box N680  
Grosvenor Place  
NSW 1220 Australia

Screen Dealing Bulletin No: 18/04

From: SFE Corporation Limited ABN 74 000 299 392

Date of Issue: 9<sup>th</sup> July 2004

Effective Date: 10<sup>th</sup> July 2004

## **TRADING TERMINAL UPGRADES**

Participants are advised that on the weekend of 10 – 11<sup>th</sup> July 2004 SFE will be performing an administrative upgrade to a key support tool on all SYCOM Terminals (known as Microsoft System Management Server – SMS). The upgrade is in preparation for the installation of calculation optimizing software on the weekend of 17 – 18<sup>th</sup> July 2004. Further information regards the availability of the Bank Bill Futures Matrix will be made on the 19<sup>th</sup> July 2004.

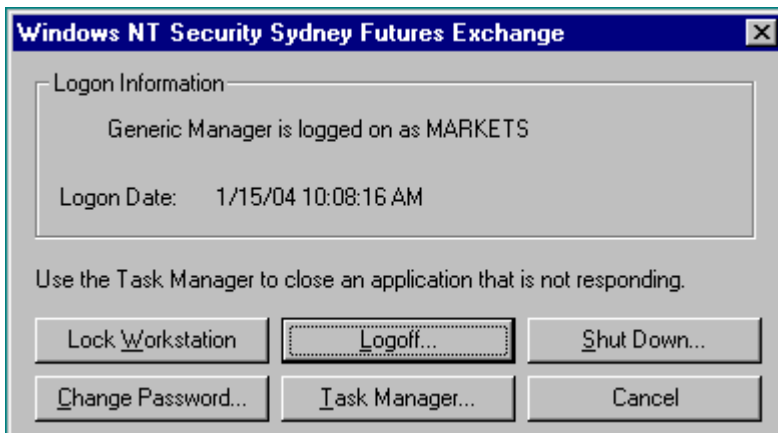
### **Required Participant Actions**

Whilst it is recognised that this is short notice Participants are requested to co-operate with SFE by ensuring **all** permanent connection terminals (MFWS and AOEI) are left in a technical state of powered on but “logged off” as defined below on the weekend of 10 – 11<sup>th</sup> July 2004. By ensuring all terminals are “logged off” SFE will remotely install software without any further required action from Participants.

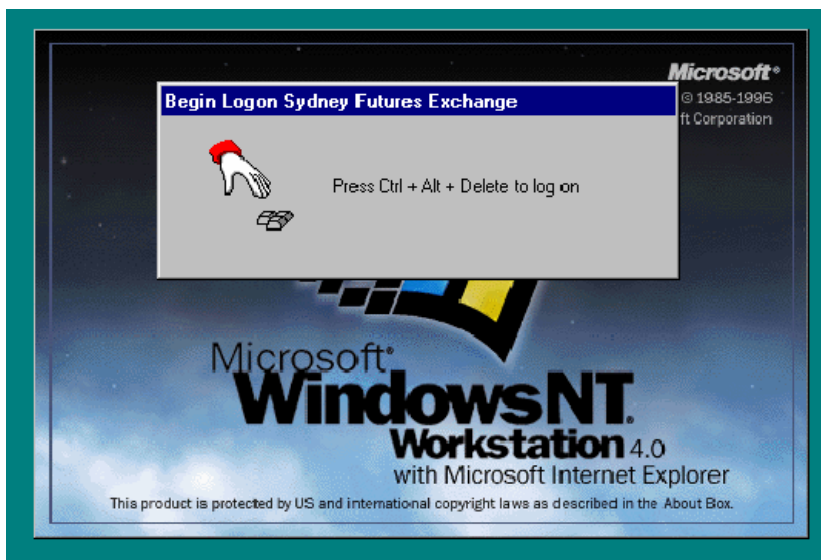
Users accessing via ISDN connection will be contacted by SFE during the week starting 12<sup>th</sup> July to arrange a convenient time for remote installation. Please be aware that users connecting via ISDN will be required to make their terminal available for the install exclusively for a period of up to 45 minutes. As such ISDN users will not be required to leave machines in a powered on state during the weekend of 10 – 11<sup>th</sup> July.

## Technical Definition of powered on but “Logged Out” Status

To leave the terminal in a status of powered on but “Logged Off” Participant’s should hold down the **Ctrl+Alt+Del** keys simultaneously and click **Logoff**.



On completion the screen should display the following,



Should you have any questions please contact the Business Operations Helpdesk on 9256-0677 or [sycom@sfe.com.au](mailto:sycom@sfe.com.au) .

*David Raper*

David Raper  
**Manager, Business Operations - Derivatives**

SFE takes no responsibility for any errors or omissions contained in this bulletin and will not be liable for any reason including without limitation negligence, for losses, consequential or otherwise, arising from or in connection with decisions made in reliance upon this information. This information does not substitute for the Business Rules and in the case of inconsistency the Business Rules prevail. Before acting on any matter contained in this bulletin readers should discuss the matter with their own professional advisers.