



www.sfe.com.au

30 Grosvenor Street
Sydney NSW 2000 Australia
Telephone 61 2 9256 0555
Facsimile 61 2 9256 0666

PO Box N680
Grosvenor Place
NSW 1220 Australia

Screen Dealing Bulletin No: 21/04

From: SFE Corporation Limited ABN 74 000 299 392

Date of Issue: 15th July 2004

Effective Date: 17th July 2004

WORKSTATION PERFORMANCE UPGRADE

Participants are advised that on the weekend of 17 – 18th July 2004 SFE will be performing the remainder of an administrative upgrade to a key support tool on all SYCOM Terminals (known as Microsoft System Management Server – SMS). In addition SFE will be implementing a software enhancement on all terminals to further optimize the calculations performed on the terminal in relation to Implied Prices. This enhancement is designed to improve recent terminal performance issues experienced as a result of a large increase in non-sequential and long duration intra spread orders. Further information regards the availability of the Bank Bill Futures Matrix will be made between the 19th and 20th July 2004.

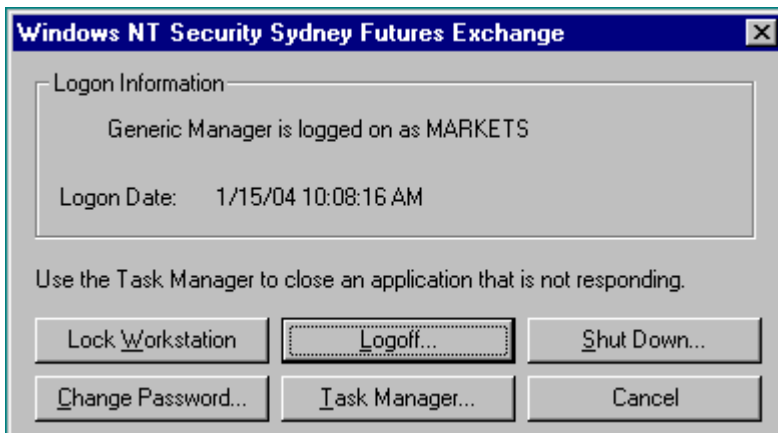
Required Participant Actions

Participants are requested to co-operate with SFE by ensuring all permanent connection terminals (MFWS and AOEI) are left in a technical state of powered on but “logged off” as defined below on the weekend of 17 – 18th July 2004. By ensuring all terminals are “logged off” SFE will remotely install software without any further required action from Participants.

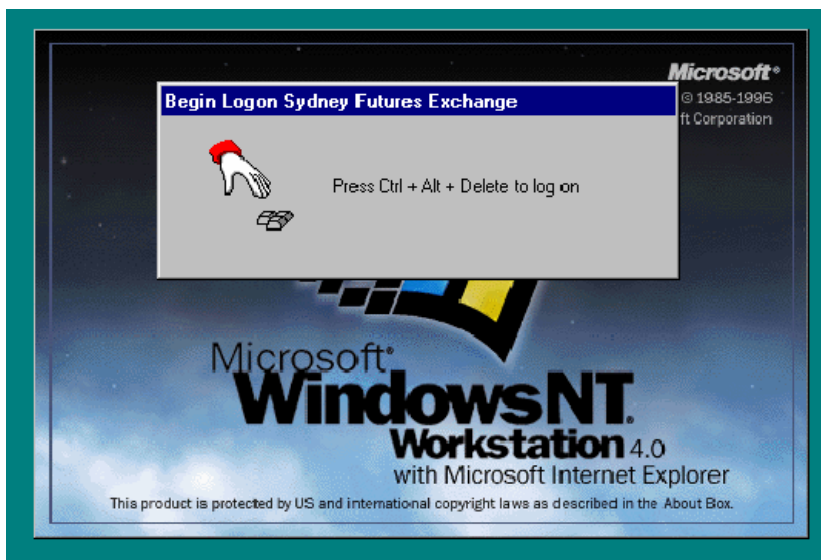
ISDN users will not be required to leave machines in a powered on state during the weekend of 17 – 18th July.

Technical Definition of powered on but “Logged Out” Status

To leave the terminal in a status of powered on but “Logged Off” Participant’s should hold down the **Ctrl+Alt+Del** keys simultaneously and click **Logoff**.



On completion the screen should display the following,



Should you have any questions please contact the Business Operations Helpdesk on 9256-0677 or sycom@sfe.com.au .

David Raper

David Raper
Manager, Business Operations - Derivatives

SFE takes no responsibility for any errors or omissions contained in this bulletin and will not be liable for any reason including without limitation negligence, for losses, consequential or otherwise, arising from or in connection with decisions made in reliance upon this information. This information does not substitute for the Business Rules and in the case of inconsistency the Business Rules prevail. Before acting on any matter contained in this bulletin readers should discuss the matter with their own professional advisers.